

The 29LWC19DMAO/1 Industrial LCD monitor has been designed as a replacement for 19" CRT monitors.

Ease of integration into a wide range of Measurement, Instrumentation and Human-Machine interface applications has been a key consideration.

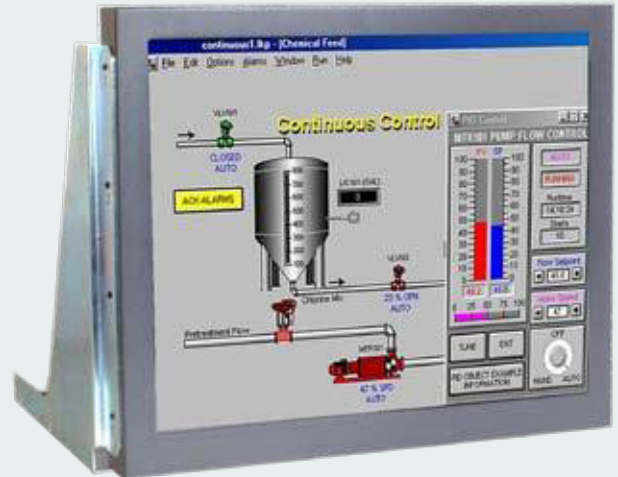
KME has designed a rugged LCD monitor module, of minimum width, to match the dimensions of its 19" CRT monitor chassis. The monitor is housed in a rugged metal case with rear fixing points. The LCD module is ventilated for best reliability when mounted within the OEM enclosure. EMC considerations include the use of a metal shield over the front of the LCD panel. Toughened, non-glare safety glass protects the LCD.

The A/D board has been designed to accept a wide range of signal timings from 15kHz up to SXGA standard, including CGA & EGA legacy signals. Set-up controls for fine-tuning of the display are located at the rear of the monitor. Once set, no further adjustments should be required, and the last setting is stored in memory.

**Features**

- Minimum Width (19" CRT Monitor dimensions)
- CGA/EGA/VGA/SXGA compatible
- Analogue Video inputs via BNC/15HD
- TTL Inputs via 9D- 15D Accessory Cable
- Pre-Programmed for non-standard Legacy signals
- Rear Fixings for CRT Chassis Mounting

*19" LCD Chassis  
Replacement Monitor  
for 19" CRT  
29LWC19DMA01*



Specifications: see next page

Specifications		
TFT Characteristics	Type Max. Resolution Active Display Area Contrast Ratio Brightness Viewing angles (at CR>10) Backlight life Nr. of colours Clock rate	AM Colour TFT 1280 x 1024 pixels 376 x 301 mm 1000:1 typical 250 cd/m <sup>2</sup> typical 140°H, 140°V 50,000 hrs typical 16 million 150MHz max
Input connectors	9D, 15D, BNC x 5	
Video Signal	Analog RGB 0.7-1.0Vp-p	or TTL >2.75Vp-p
Signal Sync	Separate H&V (+/-ve) TTL	or Composite (-ve) TTL or Sync-on-Green (-ve) 0.3V
Synchronisation Range	Horizontal scan Vertical scan	15 to 60kHz 40 to 100Hz
Multiscan Support	Fast Scan Support	1280 x 1024 SXGA 1024 x 768 XGA 800 x 600 SVGA 640 x 480 VGA
Power supply	90 - 260V AC	
Power consumption	50W (Max)	
Environmental	Storage temp. Operating temp.	-20°C to 60°C 0°C to 50°C
Weight	5 kg approx	
Controls (On Screen Display buttons at rear)	Brightness, Contrast, H/V Position & Size, Frequency, Frequency Fine, Colour	
Part numbers		
Model	29LWC19DMA01/1	

Specifications are subject to change without notice.

#### • Monitors

Desktop Monitors  
Large screen Monitors  
Custom-made Monitors  
19" Rack Mount Monitors  
Rear Mount Monitors  
Monitors for Panel Mount  
Monitors for VESA Mount  
Kiosks  
Accessories

#### • Monitors – Specific applications

Stainless Steel Monitors  
Car Displays  
Marine Monitors  
Military Monitors  
Replacement Monitors  
Train Monitors

#### • Panel PC's

High Performance Systems  
Custom made Panel PC's  
Low Power Systems  
Extreme environments

#### • Pointing devices

Accessories  
Touchpads  
Trackballs  
Trackball Modules  
Joysticks  
Custom made Pointing Devices

#### • Keyboards

Desktop Keyboards with or without pointer  
Built-in Keyboards with or without pointer  
Cables & Connectors  
Custom made Keyboards



Mulder-Hardenberg, est. 1927, is the answer to professional demands in the domain of electronic related environments. We don't just sell products. We use our multidiscipline knowledge to provide the best possible solution, designed to your specific interest.

#### Contact details:

The Netherlands  
Mulder-Hardenberg B.V.  
Westerhoutpark 1a  
2012 JL Haarlem  
Tel.: +31 23 531 91 84  
infoNL@m-h.biz

Belgium, France, Luxemburg  
Mulder-Hardenberg N.V.  
Hoge Weg 129  
B-2940 Stabroek  
Belgium  
Tel.: +32 3 660 13 20  
infoBE@m-h.biz

Germany  
Mulder-Hardenberg GmbH  
Nordring 13  
D-65719 Hofheim/Ts  
Tel.: +49 6192 - 97 91 85  
infoDE@m-h.biz